

fullbeam

visualtheatre



My Baby Just Cares for Me

Technical Rider

2009

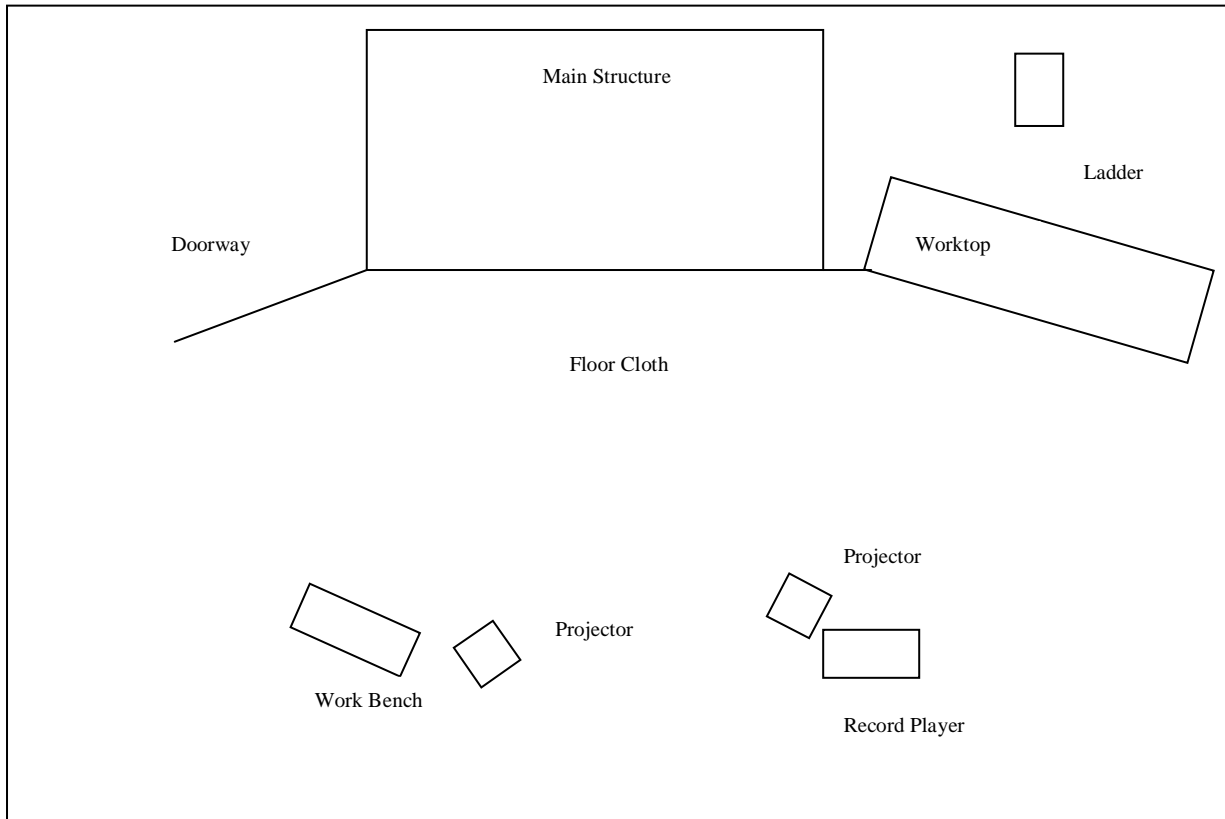
General Information:

“My Baby Just Cares For Me” is a puppetry production based around the story of a daughter and her father as he suffers with developing Alzheimers. Despite its strong theme it is a light hearted production with lots of music, dancing and good humour.

Technical Requirements:

- **Performance Area:** 6m deep, 6m wide, 4m high.
- **Set Breakdown:** Lino Floor Cloth and Scaff Set.
- **Masking:** We require two standard black flats or tabs just for actors to be behind and set some props.
- **Dressing Rooms:** One Dressing Room for Two Performers. Water required in the dressing room and tea and coffee appreciated.
- **Transport:** We travel in a LWB Hi top van. Reg No X127 UOE and will need somewhere to park. If this is a problem please get in touch.
- **Lighting:** We have a USB stick for a Zero 88 Jester. We tour with one birdie, set downstage centre, which will need to be controlled from the LX desk. See LX plan for further details.
- **Sound:** We require two sources either 2 CD's, 2MD's, or one of each and use of in house PA.
- **Operation:** Sound, Lighting and A.V will be operated by our Production Manager and operator preferably with direct view of the stage, or from inside auditorium with room for A.V position.
- **A.V:** We tour with two projectors and two laptops which run off PowerPoint. Both projectors are on stage so don't need to be rigged. We have two 30m VGA's if you feel this will be too short to get from Operating Position to stage please get in touch.
- **Power:** We need to plug in 5 items to 13amp on stage. The two projectors, two small lamps, and a record player.
- **Crew:** We tour with a Production Manager and Operator. Will require one in house technician to assist with get in, patch and programming of a LX desk.
- **Duration:** The show runs at about 1 hour 10 minutes without an interval.
- **Get In Time:** 7 hours prior to house opening
- **Get Out Time:** 2 hours maximum
- **Performers** – Frances Merriman & Adam Fuller

Stage Plan (Not to Scale)



AUDIENCE

Stage Photo



Sound – Playlist

	Title	Artist	Composer/s	Publisher Label	Album Title	Release Date	Times Played	Duration
1	Lets Wade in the Water	Marlena Shaw	Ramsey Lewis	Chess	Wade in the Water	1966	1	3:29
2	My Babe	Little Walter	Willie Dixon	Checker Records	The Best	1955	1	2:45
3	Intimacy of the Blues	Duke Ellington	Edward (Duke) Ellington	Original Jazz Classics	The Intimacy of the Blues, The Duke Ellington Small Bands	1991	1	3:20
4	What'd I Say	Jonny Cash and June Carter	Ray Charles	Atlantic	What'd I Say	1959	1	2:56
5	The Good, The Bad and The Ugly	L'Orchestra Cinematique	Ennio Morricone with Bruno Nicolai Conducting	RCA	Film Soundtrack	1966	1	2:00
6	Walking the Blues	Willie Dixon	Willie Dixson	Checkers Records	The Blues	1955	1	1:05
7	Walking After Midnight	Patsy Cline	Alan Block and Don Hecht	Decca	Patsy Cline	1957	1	2:37
8	Gee Baby, Ain't I Good to You	Louis Armstrong and Ella Fitzgerald	Andy Razaf and Don Redman	Verve	Compact Jazz	1988	1	3:53
9	Freight Loader	The Yardbirds	Eric Clapton and Jimmy Page	Remark	London Time, Volume 2	2006	1	1:40
10	Born to Boogie	Carl Perkins	Jason Elgin and Tom Fuller	RCA	Take me Back	1993	1	1:20
11	It Ain't Necessarily So	Oscar Peterson	George Gershwin and Ira Gershwin	Verve	The Gershwin Song Book	1952	1	2:30
12	Stuck in the Middle with You	Steelers Wheel	Joe Egan and Gerry Raffery	A & M Records	Stealers Wheel	1972	1	3:32
13	Whole Lot of Lovin	Fats Domino	Dave Bartholomew and Fats Domino	Joker	Fats Domino	1960	1	0.50
14	Night Time is the Right Time	Credence Clearwater Revival	Rosevelt Sykes	Decca	Green River	1937	1	3:10
15	Blue in Green	Miles Davis	Miles Davis	Columbia	Kind of Blue	1959	1	3:25
16	Little Queenie	Chuck Berry	Chuck Berry	Chess	Chuck Berry on Top	1959	1	0.08
17	Guitar Man	Elvis Presley	Jerry Reed	RCA	The Unbelievable Guitar and Voice of Jerry Reed	1967	1	0.08
18	Who do you Love	Juicy Lucy	Ellas McDaniel	One Way	Juicy Lucy	1969	1	0.08
19	Feeling Good	Nina Simone	Leslie Bricusse and Anthony Newly	Mercury	I Put a Spell on You	1965	1	3.00

Rachel McNally - Producer

REM Projects, Unit 18, Albion Dockside Estate, Hanover Place, Bristol, BS1 6UT

Tel 0117 929 3593

Please note, this technical rider forms part of our contract with you. If you have any queries please do contact us at least two weeks prior to the performance date, if not sooner.

Please sign and return a copy of this rider to us to confirm that you have read and understood our requirements.

Signed

Name

Position

Date